

# Technology Solutions

## In-line Study Stations



Model shown with optional accessories

In-line study stations are designed with adjustability for each station to be customized for any need.

Available in 27" & 29" adjustable heights or 32" fixed height. The cable management tray, which comes standard in each unit helps eliminate excess cords.

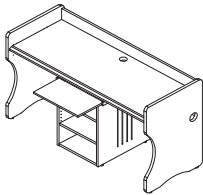
Layout and design services are available upon request.



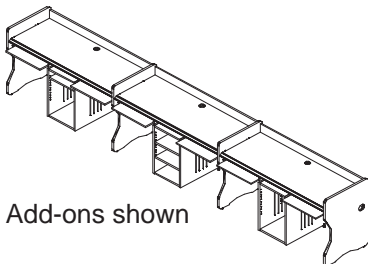
Ergo Edge

Size	Model #
24 x 36	AWSE067
24 x 60	AWSE071
24 x 72	AWSE072
30 x 36	AWSE078
30 x 60	AWSE082
30 x 72	AWSE083

### Configurations

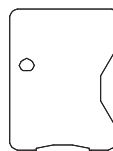


72" model shown

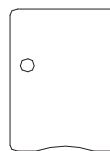


Add-ons shown

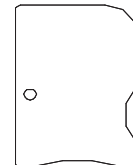
### Leg Options



Contoured

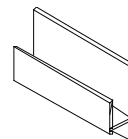


Straight



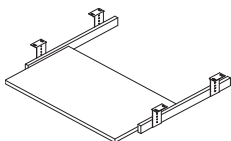
Privacy

### Standard Feature

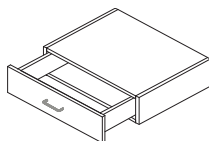


Cable Management

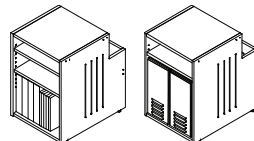
### Accessory Options



AT\*-Keyboard Tray



K9100-Pencil Drawer



BU-CPU/Book Storage  
(Converts to either unit)

\*Requires at least a 29" h workstation